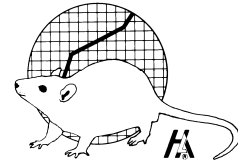


# Hilltop Lab Animals, Inc.

Serving science for over 75 years



## Viral Antibody Profile March 31, 2008

The following viral antibody profiles are the result of extensive serology. Guinea pig profiles include *Encephalitozoon cuniculi*. Profiles include CVF<sup>®</sup> rats, mice and guinea pigs being supplied by Hilltop Lab Animals, Inc.

### OUTBRED RATS

- SD -- Hla<sup>®</sup>:(SD)CVF<sup>®</sup>  
[Colony #25, 46]
- Wistar – Hla<sup>®</sup>(WI)CVF<sup>®</sup>  
[Colony #45]
- Long Evans - Hla<sup>®</sup>(LE)CVF<sup>®</sup>  
[Colony #50]
- Spontaneously Hypertensive -  
Hla<sup>®</sup>(SHR)CVF<sup>®</sup>  
[Colony #47]

### INBRED RATS

- Fischer 344 -- F344/NHla<sup>®</sup>CVF<sup>®</sup>  
[Colony #34]
- Lewis -- LEW/Hla<sup>®</sup>CVF<sup>®</sup>  
[Colony #48]

Method	Test	Results
ELISA	CARB	NEG
	Hant	NEG
	<i>M.arth</i>	NEG
	<i>M.pul</i>	NEG
	PVM	NEG
	RCV/SDA	NEG
	Reo	NEG
	Send	NEG
IFA	GDVII	NEG
	LCM	NEG
	Parvo	NEG
HAI	H-1	NEG
	KRV	NEG
	RCMV	NEG
PCR	Helico	NEG
	MNV	NEG

### OUTBRED MICE

- Swiss – Hla<sup>®</sup>:(ICR)CVF<sup>®</sup>  
[Colony #44]

### INBRED MICE

- BALB/c – BALB/cHla<sup>®</sup>CVF<sup>®</sup>  
[Colony #49]
- C57BL/6<sup>+</sup> – C57BL/6NHla<sup>®</sup>CVF<sup>®</sup>  
[Colony #33]

### HYBRID MICE

- IRCF1 – IRCF1/Hla<sup>®</sup>CVF<sup>®</sup>  
[Colony #32]

Method	Test	Results
ELISA	MAd-FL	NEG
	Mad-K87	NEG
	CARB	NEG
	ECTRO	NEG
	EDIM	NEG
	GDVII	NEG
	Hant	NEG
	LCM	NEG
	MHV	NEG
	MVM	NEG
	<i>Mpul</i>	NEG
	Parvo	NEG
	PVM	NEG
	Poly	NEG
	Reo	NEG
	Send	NEG
IFA	MCMV	NEG
HAI	E. Cun	NEG
	K	NEG
PCR	Helico	NEG
	MNV	NEG

Hilltop Lab Animals, Inc.

131 Hilltop Drive • Scottdale, Pennsylvania 15683

(800) 245-6921 or (724) 887-8480 • FAX: (724) 887-3582 • [www.HilltopLabs.com](http://www.HilltopLabs.com)

# Hilltop Lab Animals, Inc.

Serving science for over 75 years

Viral Antibody Profile  
(Including CARB and *Mpul.*)

March 31, 2008  
Page 2

## OUTBRED GUINEA PIGS

Hartley – H1a<sup>®</sup>:(HA)CVF<sup>®</sup>

[Colony #8, #9, #43 & #51]

Method	Test	Results
ELISA	<i>E. cun</i>	NEG
	LCM	NEG
	PVM	NEG
	Reo <sup>2</sup>	NEG
	Send	NEG
IFA	<i>E. cun</i>	NEG
	Adeno	NEG
<i>Bordetella</i>		NEG

KRV	Kilham Rat Virus
LCM	Lymphocytic Choriomeningitis Virus
MAd-FL	Mouse Adenovirus (FL)
MAd-K87	Mouse Adenovirus (K87)
MCMV	Murine Cytomegalovirus
MHV	Mouse Hepatitis Virus
MNV	Murine Norovirus
<i>M.Arth</i>	<i>Mycoplasma arthritidis</i>
<i>M.Pul</i>	<i>Mycoplasma pulmonis</i>
MVM	Minute Virus of Mice
Parvo	Orphan Parvovirus
PVM	Pneumonia Virus of Mice
Poly	Polyoma Virus
RCV/SDA	Rat Coronavirus/ Sialodacryoadenitis Viruses
Reo	Reovirus (Detects Reo 1, 2 & 3)
Send	Sendai Virus

Description of test methods abbreviations:  
ELISA Enzyme Linked Immunosorbent Assay

HAI Hemagglutination Inhibition  
IFA Immunofluorescence Assay  
PCR Polymerase Chain Reaction

Description of test abbreviations:

CARB CAR Bacillus  
Ectro Ectromelia Virus  
*E.cun* *Encephalitozoon cuniculi*  
EDIM Epizootic Diarrhea of Infant Mice  
GDVII Theiler's Mouse Encephalomyelitis Virus  
Hant Hantaan Virus  
H-1 H-1 Virus  
Helico Helicobacter (Generic assay detecting all Helicobacter organisms including *Helicobacter hepaticus*, *Helicobacter muridarum*, *Helicobacter rodentium* and *Helicobacter bilis*)  
K K Virus

CVF<sup>®</sup> and H1a<sup>®</sup> are the registered trademarks of Hilltop Lab Animals, Inc., Scottdale, Pennsylvania 15683.

<sup>1</sup> F344 rat and C57BL/6 mouse stock originated from Taconic Farms, Germantown, New York.

<sup>2</sup> Reo in Guinea Pigs (Mouse sentinels all test negative)

H1a\newbind\health\1Q08\general\HilltopLabs1q08.doc

# Hilltop Lab Animals, Inc.

Serving science for over 75 years



Gross Pathology • Parasitology • Bacteriology  
March 31, 2008

The following are gross pathology, parasitology and bacteriology profiles for the CVF<sup>®</sup> rats, mice and guinea pigs currently being supplied by Hilltop Lab Animals, Inc.

Rats						
	Hla <sup>®</sup> :(SD) CVF <sup>®</sup> (SD) Colony #25 & #46	Hla <sup>®</sup> :(WI) CVF <sup>®</sup> (Wistar) Colony #45	Hla <sup>®</sup> :(LE) CVF <sup>®</sup> (Long Evans) Colony #50	Hla <sup>®</sup> :(SHR) CVF <sup>®</sup> (Spontaneously Hypertensive) Colony #47	F344/NHla <sup>®</sup> CVF <sup>®</sup> (F344 <sup>1</sup> Rats) Colony #34	LEW/Hla <sup>®</sup> CVF <sup>®</sup> (Lewis) Colony #48
Gross Pathology*	Normal	Normal	Normal	Normal	Normal	Normal
Parasitology						
External	NEG	NEG	NEG	NEG	NEG	NEG
Duodenum	NEG	NEG	NEG	NEG	NEG	NEG
Ileum	NEG	NEG	NEG	NEG	NEG	NEG
Cecum	NEG	NEG	NEG	NEG	NEG	NEG
Colon	NEG	NEG	NEG	NEG	NEG	NEG
Bladder	NEG	NEG	NEG	NEG	NEG	NEG
Comments:	All tests were negative for helminthes, pathogenic protozoa, ameba and ectoparasites.					
Bacteriology						
Oral	NEG	NEG	NEG	NEG	NEG	NEG
Fecal	NEG	NEG	NEG	NEG	NEG	NEG
Comments:	Primary bacterial pathogens were not detected by aerobic culture techniques.					

Mice				
	Hla <sup>®</sup> :(ICR) CVF <sup>®</sup> (Swiss) Colony #44	BALB/cHla <sup>®</sup> CVF <sup>®</sup> (BALB/c) Colony #49	IRCF1/Hla <sup>®</sup> CVF <sup>®</sup> (IRCF1) Colony #32	C57BL/6N-Hla <sup>®</sup> CVF <sup>®</sup> (C57BL/6 <sup>1</sup> ) Colony #33
Gross Pathology*	Normal	Normal	Normal	Normal
Parasitology				
External	NEG	NEG	NEG	NEG
Duodenum	NEG	NEG	NEG	NEG
Ileum	NEG	NEG	NEG	NEG
Cecum	NEG	NEG	NEG	NEG
Colon	NEG	NEG	NEG	NEG
Bladder	NEG	NEG	NEG	NEG
Comments:	All tests were negative for helminthes, pathogenic protozoa, ameba and ectoparasites.			
Bacteriology				
Oral	NEG	NEG	NEG	NEG
Fecal	NEG	NEG	NEG	NEG
Comments:	Primary bacterial pathogens were not detected by aerobic culture techniques.			

**Hilltop Lab Animals, Inc.**  
**131 Hilltop Drive • Scottsdale, Pennsylvania 15683**  
**(800) 245-6921 or (724) 887-8480 • FAX: (724) 887-3582 • www.HilltopLabs.com**

# Hilltop Lab Animals, Inc.

Serving science for over 75 years

Gross Pathology • Parasitology •  
March 31, 2008

Bacteriology  
Page 2

	Guinea Pigs Hla <sup>®</sup> :(HA) CVF <sup>®</sup> (Hartley) Colony #8, #9, #43 & #51
Gross Pathology*	Normal
Parasitology	
External	NEG
Duodenum	NEG
Ileum	NEG
Cecum	NEG
Colon	NEG
Bladder	NEG
Comments:	All tests were negative for helminthes, pathogenic protozoa, ameba and ectoparasites.
Bacteriology	
Oral	NEG
Fecal	NEG
Comments:	Primary bacterial pathogens were not detected by aerobic culture techniques.

The following is offered as supplemental information to the Bacteriology Profile.  
Survey Protocol: Rodent Minimum Requirements

## RESPIRATORY SYSTEM:

### Direct 5% Sheep Blood Trypticase Soy Agar

Examine for:

- *Bordetella bronchiseptica*
- *Streptococcus pneumoniae* (Groups A, B, & C)
- *Pasteurella pneumotropica* and *P. Multocida*
- *Corynebacterium kutscheri*
- *Pseudomonas aeruginosa*
- *Klebsiella pneumoniae*
- *Klebsiella oxytoca*

### Direct MacConkey Agar

Examine for:

- *Bordetella bronchiseptica*
- *Pasteurella pneumotropica* (abortive colonies)
- *Pseudomonas aeruginosa*
- *Klebsiella pneumoniae*
- *Klebsiella oxytoca*

### TSB Broth for subculture at 24 hours to Phenylethyl Agar and MacConkey Agar

Examine Phenylethyl Agar for:

- *Streptococcus pneumoniae*
- *Corynebacterium kutscheri*

Examine MacConkey Agar for:

- *Bordetella bronchiseptica*
- *Pseudomonas aeruginosa*
- *Klebsiella pneumoniae*
- *Klebsiella oxytoca*

## GASTROINTESTINAL SYSTEM:

### Selenite Broth: Subculture at 24 hours to Brilliant Green Agar and MacConkey Agar

Examine both plates for Salmonella species

- *Pseudomonas aeruginosa*
- *Yersinia enterocolitica*

### Direct 5% Sheep Blood Trypticase Soy Agar and MacConkey Agar

Examine both plates for *Klebsiella pneumoniae*

- *Klebsiella oxytoca*
- *Citrobacter freundii* (Var. 4280 mice)

### GN Broth: Subculture at 24 hours to 5% Sheep Blood and MacConkey Agar Plates

Examine both plates for *Klebsiella pneumoniae*

- *Klebsiella oxytoca*
- *Citrobacter freundii* (Var. 4280 mice)
- *Yersinia enterocolitica*
- *Pseudomonas aeruginosa*
- *Shigella spp.*

Testing done annually for Rat Bite Fever - *Streptobacillusmoniliformis*

\*Tissues examined microscopically: heart, lung, liver, kidney, spleen, pancreas, salivary gland and node, jejunum, ileum, cecum, brain, eyes, harderian glands, nasal passages, middle ears.

Information provided by:

Hilltop Lab Animals, Inc.  
131 Hilltop Drive  
Scottdale, PA 15683  
(800) 245-6921 or (724) 887-8480  
FAX: (724) 887-3582

Hla\newbind\health\1Q08\general\HilltopLabs1q08.docx